

USER GUIDE

Safety Direction

1. Before starting the installation, please ensure the power off.
2. After turning on the power, if the temperature of led fixture is very high, please do not touch with hand.
3. The lamp of this kind of led fixture could not be repaired if damaged.
4. Be sure to connect ground lead.
5. Please do not look at the light led fixture directly.
6. This kind of led fixture is for indoor use.
7. If you need any more information, please contact the importer.
8. In case wire damage, please contact the importer.
9. This product is made of aluminum, plastic.

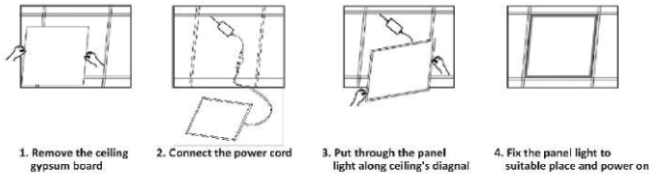
Note: the black color wire or brown is referred to the mark (+). the White color wire or blue is referred to mark (-).

Made in China

Installation instruction:

Installation Instructions:

GRID Based Recessed Panel Light



Suspended Panel Light

